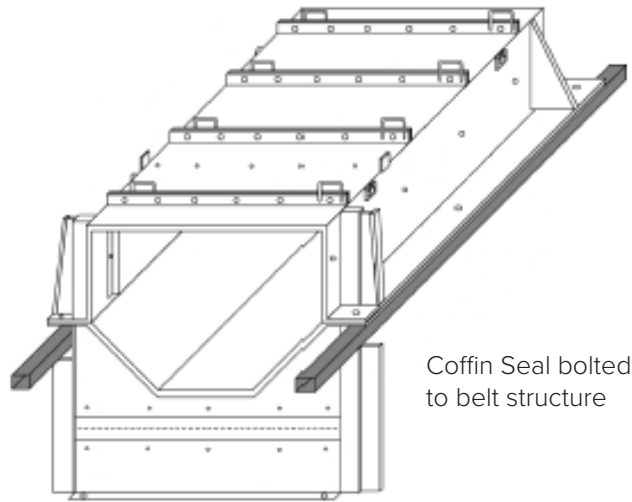
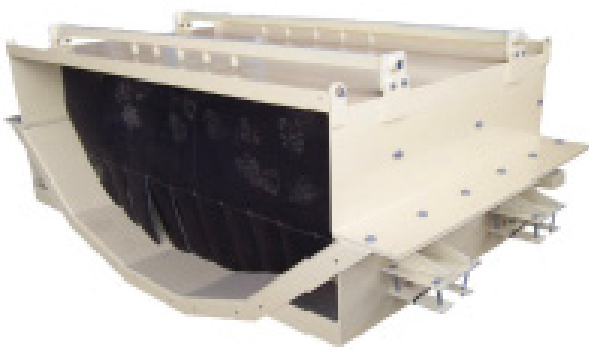


Coffin Seal

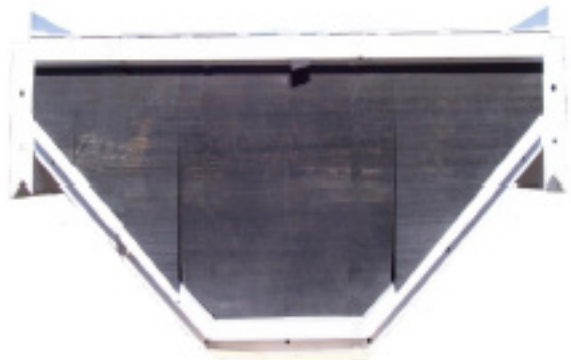
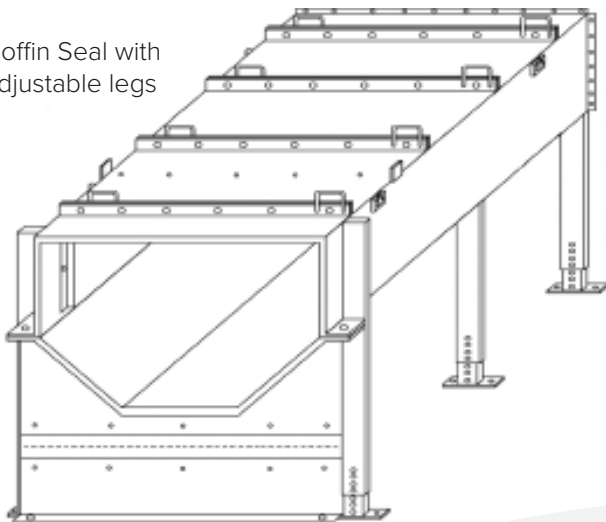
Coffin seals are used in underground coal mines to keep the area around the conveyor belt sealed. With air flow being monitored at all times coffin seals are the most effective way of sealing this area. We can manufacture a coffin seal to suit any size conveyor belt. We have designed our coffin seals to have easy, on site, replaceable wear components. This not only significantly prolongs the life of the seal but allows the worn components to be replaced after it has been installed avoiding the need to remove the seal for repairs.

[For any further information or pricing please contact us.](#)



Coffin Seal bolted to belt structure

Coffin Seal with adjustable legs



☎ 02 4967 2164

✉ sales@ghfabrications.com.au

📍 4 McIntyre Road, Tomago NSW 2322

✉ PO Box 623, Raymond Terrace NSW 2324

GHFABRICATIONS.COM.AU